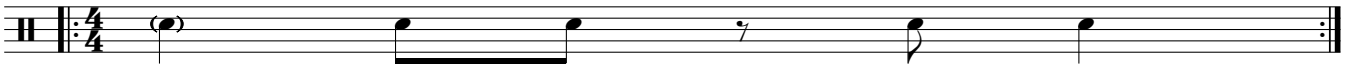


# Idea #28

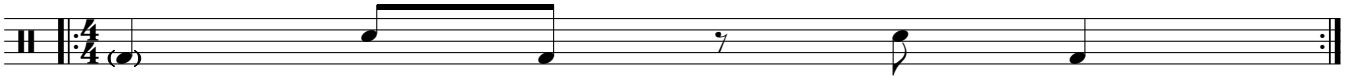
## Advanced Comping Developments

Copyright © T R Lake  
<http://drumming.timsparlour.com>

1A: Basic Pattern



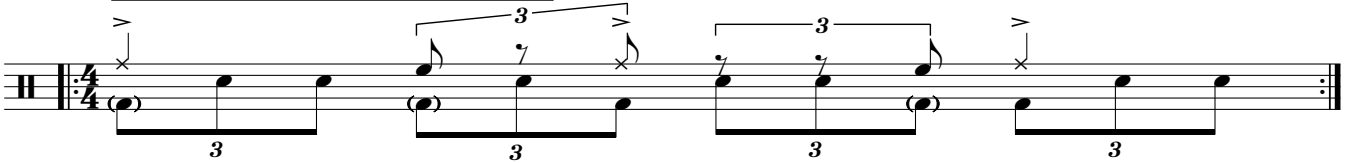
1B: Short & Long



1C: Filling in with triplets



1D: Dawson Short - Long Voicing with triplets



1E: Ralph Peterson accented Elvinesque triplets



2A: Basic Pattern



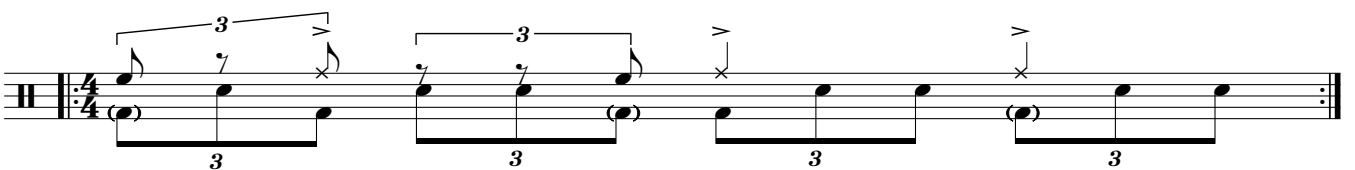
2B: Short & Long



2C: Filling in with triplets



2D: Dawson Short - Long Voicing with triplets



2E: Ralph Peterson accented Elvinesque triplets



3A Basic Pattern

Musical notation for 3A Basic Pattern in 4/4 time. The staff begins with a treble clef and a key signature of one flat. The rhythm starts with a quarter rest, followed by a quarter note, a half note, and a dotted half note. The final measure contains a quarter note and a half note.

3B: Short & Long

Musical notation for 3B: Short & Long in 4/4 time. The staff begins with a treble clef and a key signature of one flat. The rhythm starts with a quarter rest, followed by a quarter note, a half note, and a dotted half note. The final measure contains a quarter note and a half note.

3C: Filling in with triplets

Musical notation for 3C: Filling in with triplets in 4/4 time. The staff begins with a treble clef and a key signature of one flat. The rhythm consists of four measures, each containing a triplet of eighth notes.

3D: Dawson Short - Long Voicing with triplets

Musical notation for 3D: Dawson Short - Long Voicing with triplets in 4/4 time. The staff begins with a treble clef and a key signature of one flat. The rhythm consists of four measures, each containing a triplet of eighth notes. The first and third measures have a 'Dawson Short' voicing (a quarter rest followed by a quarter note), and the second and fourth measures have a 'Long Voicing' (a dotted half note).

3E: Ralph Peterson accented Elvinesque triplets

Musical notation for 3E: Ralph Peterson accented Elvinesque triplets in 4/4 time. The staff begins with a treble clef and a key signature of one flat. The rhythm consists of four measures, each containing a triplet of eighth notes with an accent (>) over the first note.

4A Basic Pattern

Musical notation for 4A Basic Pattern in 4/4 time. The staff begins with a treble clef and a key signature of one flat. The rhythm starts with a quarter note, followed by a dotted half note, a quarter rest, and a quarter note.

4B: Short & Long

Musical notation for 4B: Short & Long in 4/4 time. The staff begins with a treble clef and a key signature of one flat. The rhythm starts with a quarter note, followed by a dotted half note, a quarter rest, and a quarter note.

4C: Filling in with triplets

Musical notation for 4C: Filling in with triplets in 4/4 time. The staff begins with a treble clef and a key signature of one flat. The rhythm consists of four measures, each containing a triplet of eighth notes.

4D: Dawson Short - Long Voicing with triplets

Musical notation for 4D: Dawson Short - Long Voicing with triplets in 4/4 time. The staff begins with a treble clef and a key signature of one flat. The rhythm consists of four measures, each containing a triplet of eighth notes. The first and third measures have a 'Dawson Short' voicing (a quarter rest followed by a quarter note), and the second and fourth measures have a 'Long Voicing' (a dotted half note).

4E: Ralph Peterson accented Elvinesque triplets

Musical notation for 4E: Ralph Peterson accented Elvinesque triplets in 4/4 time. The staff begins with a treble clef and a key signature of one flat. The rhythm consists of four measures, each containing a triplet of eighth notes with an accent (>) over the first note.